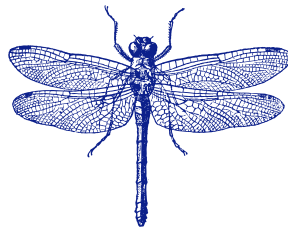




# THE BEACH HOUSE

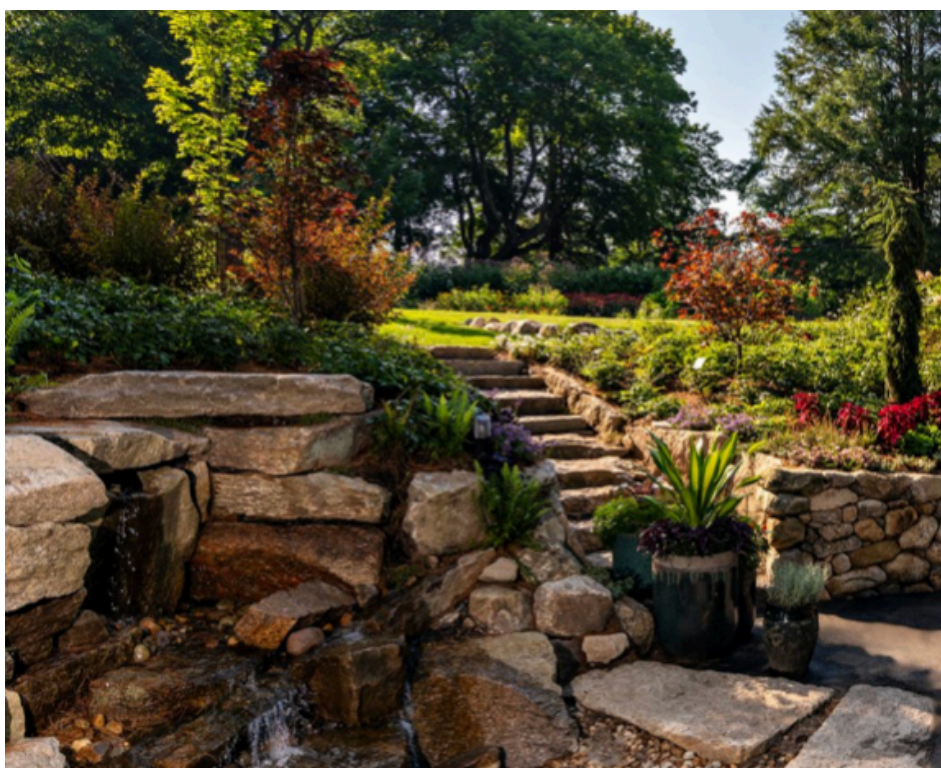
*Houseguide*





## ABOUT OUR AREA

*Welcome to Sandwich, Massachusetts—Cape Cod's oldest town, where history meets coastal charm. 54 Carman Ave is perfectly situated near top attractions, including the newly rebuilt Sandwich Boardwalk, offering stunning views of Cape Cod Bay. Visit the Sandwich Marina, a bustling harbor perfect for a seaside stroll, and grab a bite at The Pilot House, known for its fresh seafood and waterfront dining. Beer lovers can't miss Tree House Brewery, a must-visit for craft brews with an oceanfront setting. Explore the Heritage Museums & Gardens, or step back in time at the Hoxie House. Whether you're here to relax or explore, Sandwich has something for everyone!*





## VIP Services

**Early Check-In     \$30**

Check for availability. Early check-in can begin at 12pm.

**Celebration Surprise     \$60**

10 inch round birthday cake with candles and vanilla ice cream. Birthday Decor including Banner, Plates, Napkins, Cutlery

**Fresh Flowers     \$45**

Choice of 1 Dozen Roses or seasonal bouquet

**From the Cellar     \$30**

Choice of Wine -Cab/Pino Noir/Chardonnay/Prosecco/Champagne or Rose

**Charcuterie     \$50**

Charcuterie Board with Artisan Bread/Crackers, Gourmet Cheeses, Cured Meats, Dried Fruit, Chocolate

**S'mores Kit     \$25**

Marshmallows, graham crackers, chocolate bars and roasting sticks.

**Late Check-Out     \$30**

Check for availability. Check out can be extended to 2pm.

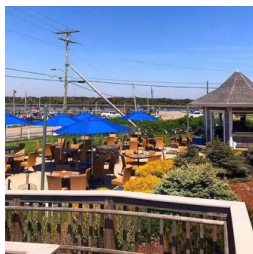
*We are here to make your stay as memorable as possible.  
If you need a service that is not listed feel free to ask and we will do our best  
to accommodate.*



## *Food & Drink*

Ready to explore the local flavors? Here's a curated list of our favorite spots for food and drink around town – each one is a must-try!

---



### **BEST RESTAURANT**

*Fishermans View  
The Pilot House  
Sesafood Sams  
Moto for Pizza.*



### **BEST BAR**

*Tree House Brewery*



### **BEST BEACH**

*Town Neck Beach*



### **BEST CAFE**

*Dunbars Tea Room  
Snowy Owl  
Cafe Chew*



### **BEST HIKE**

*Shawnee-Crowell  
State forest has  
endless great hikes*



### **BEST SHOP**

*Modern Vintage*

*Bon appétit! Enjoy every delicious moment*



PRISTINE PROPERTIES

---

## *Local Favorites*

We've compiled our top picks for the best places to unwind by the shore. Whether you're up for swimming, biking, or simply yearning for a lobster roll and a lazy nap, these beloved local spots are sure to delight!

---



*Sandwich Boardwalk  
Town Neck Beach  
Heritage Museums & Gardens  
Shawme-Crowell State Forest  
Green Briar Nature Center  
Sandwich Glass Museum  
Cape Cod Canal Pathways  
Dexter Grist Mill  
Hoxie House  
Sandwich Marina  
Scorton Creek  
Thornton W. Burgess Museum  
Titcomb's Bookshop  
Dunbar House Restaurant & Tea Room*

*Sun, surf, and sand await!*





## THE DRAGONFLY LOOKOUT

---

### *Things to do*

#### Just a Stone's Throw Away: Explore Attractions for the Active Traveler

---

##### SANDWICH GLASS MUSEUM



Located a short drive from Carman Ave, the Sandwich Glass Museum celebrates the area's rich history of glassmaking. Visitors can explore exhibits showcasing antique glassware, watch live glassblowing demonstrations, and learn about the craftsmanship that made Sandwich famous in the 19th and early 20th centuries. It's a fascinating attraction for history buffs and art enthusiasts alike.



##### SANDWICH HISTORIC TOWN CENTER

The historic Sandwich Town Center features charming shops, cafes, and restaurants. Walking through the quaint streets offers a glimpse into New England's small-town charm, with opportunities to explore local arts, enjoy a coffee, or browse for unique gifts and souvenirs.



##### CAPE COD CANAL

Cape Cod Canal offers 7 miles of paved trails on either side of the canal for walking and biking. It is a great spot to fish and stop for a picnic before heading to Cape Cod.



##### SANDWICH MUSEUM

Heritage Museums & Gardens in Sandwich, Massachusetts, is a 100-acre cultural and botanical destination that seamlessly blends art, history, and nature. Established in 1969 by Josiah K. Lilly III, the site features beautifully landscaped gardens—including a renowned collection of rhododendrons hybridized by Charles O. Dexter—as well as daylilies, hostas, and hydrangeas. Visitors can explore three galleries housing American folk art, antique automobiles, and a fully operational 1908 Looft carousel. Family-friendly attractions like Hidden Hollow, a certified outdoor nature classroom, and seasonal exhibits such as “Big Bugs” enhance the experience, making it a vibrant destination for all ages.



## THE DRAGONFLY LOOKOUT

---

### *Day Trips*

A short drive away: Discover nearby attractions and activities easily accessible by car.

---



#### CAPE COD MUSEUM OF NATURAL HISTORY

The Cape Cod Museum of Natural History in Brewster, MA, features nature exhibits, an aquarium, walking trails, and interactive displays for all ages. Set on 80 acres with access to surrounding conservation land, it offers hands-on learning about Cape Cod's diverse ecosystems and wildlife.



#### SPEND A DAY IN PROVINCETOWN

Captain John Boats offers a fast ferry ride to Provincetown. With its own rich history and vibrant shops, it is definitely worth the day trip. The ferry is a relaxing ride and is a great way to beat the traffic.



#### WHALE WATCHING

Whale Watches are a big attraction in Plymouth. We use Captain John Whale Watches downtown. It is amazing to see the humpback whales just off of our coast, we highly recommend this if you are a nature lover.



#### PLIMOTH PATUXET MUSEUMS

Immersive exhibits including the Mayflower II, Plimoth Patuxet Museum and the Jenney Grist Mill. The museum also offers select movies. Check their website for all ticket information.

*Your Adventure Awaits!*



## THE DRAGONFLY LOOKOUT

---

### *Kids Activities*

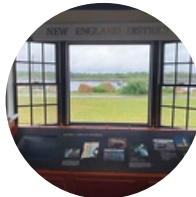
We've handpicked the best spots where imagination and play come to life, ensuring that your family's trip to Plymouth will be enjoyable for the whole family.

---



#### SPLASH PADS

Buzzards Bay Park in Bourne as well as the Sandwich Recreation Department at 260 Quaker Meeting House Rd have awesome splash pads.



#### CAPE COD CANAL VISITOR CENTER

A museum that is fun, fascinating, family friendly and FREE. Interactive exhibits offer something for visitors of all ages. Board a 40-foot retired boat, captain a virtual boat ride through the canal, discover local wildlife and more.



#### THE ADVENTURE PARK

Part of Heritage Gardens in Sandwich, MA this Aerial Adventure Park offers zip lines and a self-guided tree-to-tree climbing adventure. Suitable for adults and children ages 7+.



#### PLYMOUTH CRUISES ABOARD LOBSTER TALES

A variety of harbor cruises including a lobster cruise, kids pirate cruise, ice cream sundae harbor cruise, sunset and brunch cruises.

*Little Explorers, Big Adventures!*